

/ Perfect Welding / Solar Energy / Perfect Charging



# TPS/i

**STEEL** / Edition

Optimized for manual steel applications

# VARYING STEEL APPLICATIONS. TOUGH CONDITIONS. OPTIMIZED CHARACTERISTICS. ROBUST TOOL.

## STEEL / Edition

With the TPS/i "Steel Edition", all of the applications are focused around and optimized for one particular type of welding: steel welding. The "Steel Edition" has more than 100 steel characteristics for standard and pulsed arcs.

The result:

- / The right characteristic for every steel application
- / Steel plates from just 1 mm thick can be welded

The tough conditions the tool is used in also demand great stability. The TPS/i series guarantees absolutely perfect operation in this regard.

What's your  
welding challenge?

Let's get connected.



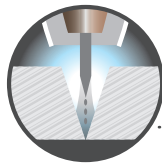
# STEEL CHARACTERISTICS PACKAGE

The TPS/i Steel Edition has characteristics optimized for processing unalloyed and low-alloy steels. There are also characteristics available for the most common gases and filler metals (solid and flux core wires up to 1.6 mm).

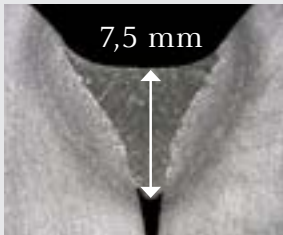
## CHARACTERISTICS

### PCS- pulse controlled spray arc

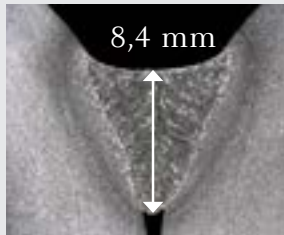
PCS combines the advantages of pulsed and spray arcs in one characteristic. The PCS characteristic ensures that intermediate arcs are avoided. The result is a smooth transition from a pulsed arc to a spray arc, which reduces welding spatter. For this reason, PCS is most often used for small gaps, fillet welds, and root passes.



#### CHARACTERISTIC COMPARISON: Pulsed arc vs. PCS



Pulsed arc  
Vd: 15.5 m/min  
U: 27.5 V / I: 265 A



PCS  
Vd: 15.5 m/min  
U: 26.6 V / I: 233 A

#### THE ADVANTAGES OF PCS

- / Reduced joint preparation
- / High deposition rate
- / Higher welding speeds
- / Less rework

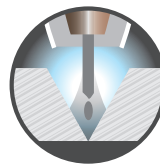
### UNIVERSAL

Simple, time-saving welding settings for standard steel welding applications, with an arc that is easy to control.



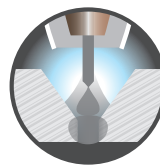
### DYNAMIC

Concentrated, dynamic arc for deep and narrow penetration. Higher welding speeds can also be achieved.



### ROOT

The powerful arc with good gap-bridging enables straightforward root passes – even during position welding.



## WPS STEEL PACKAGE



**EN 1090 certification made easy.**

This package contains a number of welding procedure specifications that are also compatible with other MIG/MAG welding systems. The WPS has been certified in accordance with EN 15612 through the standard welding process.

#### HIGHLIGHTS:

- / Steel qualities up to S460 applicable
- / Plate thicknesses from 1-50 mm
- / Includes WPS for pipes and tubular constructions



## RECOMMENDED ACCESSORIES



### K4 FUME EXTRACTION TORCH

The K4 welding torch removes the welding fumes at the source. Its compact design enables straightforward torch guidance.



### DUST FILTER

The dust filter offers additional protection against contaminants in the housing of the TPS/i – particularly in tough environmental conditions.



### JOBMASTER

With the JobMaster welding torch, the user always has the most important welding parameters (U, I, Vd) on the torch and can easily adjust them at any time.



### USER MANAGEMENT

The TPS/i has an authorization system, which enables the user to create individual authorizations. Users log in to the welding system using a card or a key fob, which is assigned specifically to them.

### THE BENEFITS

/ Individual authorizations / Traceability / Error reduction



/ Keycard

/ Key fob

/ Perfect Welding / Solar Energy / Perfect Charging

### THREE BUSINESS UNITS, ONE GOAL: TO SET THE STANDARD THROUGH TECHNOLOGICAL ADVANCEMENT.

What began in 1945 as a one-man operation now sets technological standards in the fields of welding technology, photovoltaics and battery charging. Today, the company has around 4,550 employees worldwide and 1,241 patents for product development show the innovative spirit within the company. Sustainable development means for us to implement environmentally relevant and social aspects equally with economic factors. Our goal has remained constant throughout: to be the innovation leader.

Further information about all Fronius products and our global sales partners and representatives can be found at [www.fronius.com](http://www.fronius.com)

v09 May 2018 EN

**Fronius Canada Ltd.**  
2875 Argentia Road, Units 4,5 & 6  
Mississauga, ON L5N 8G6  
Canada  
Telephone +1 905 288-2100  
Fax +1 905 288-2101  
[sales.canada@fronius.com](mailto:sales.canada@fronius.com)  
[www.fronius.ca](http://www.fronius.ca)

**Fronius USA LLC**  
6797 Fronius Drive  
Portage, IN 46368  
USA  
Telephone +1 877 FRONIUS  
[sales.usa@fronius.com](mailto:sales.usa@fronius.com)  
[www.fronius-usa.com](http://www.fronius-usa.com)

**Fronius UK Limited**  
Maidstone Road, Kingston  
Milton Keynes, MK10 0BD  
United Kingdom  
Telephone +44 1908 512 300  
Fax +44 1908 512 329  
[info-uk@fronius.com](mailto:info-uk@fronius.com)  
[www.fronius.co.uk](http://www.fronius.co.uk)

**Fronius International GmbH**  
Froniusplatz 1  
4600 Wels  
Austria  
Telephone +43 7242 241-0  
Fax +43 7242 241-953940  
[sales@fronius.com](mailto:sales@fronius.com)  
[www.fronius.com](http://www.fronius.com)